

TECHNICAL MANUAL }
NO. 9-4910-261-14P }

HEADQUARTERS
DEPARTMENT OF THE ARMY
Washington, D. C., 20025 14 October 1971

OPERATOR'S, ORGANIZATIONAL, DIRECT SUPPORT,
AND
GENERAL SUPPORT MAINTENANCE
REPAIR PARTS AND SPECIAL TOOLS LISTS
(INCLUDING DEPOT MAINTENANCE REPAIR PARTS AND SPECIAL TOOLS)
FOR
JACK, DOLLY-TYPE, HYDRAULIC: 10-TON CAPACITY
(WALKER MFG. CO. MODEL-780) (4910-289-7233)

—————
This manual is current to 1 October 1971

		Paragraph	Page
Section I.	Introduction1	2
II.	Repair Parts List	2a	2
III.	Special Tools List	2b	2
IV.	Repair Parts List	2c	2
	Repair Parts for:		
	Frame and wheel assembly		
	Bell crank assembly		
	Hydraulic unit assembly		
	Handle and quadrant assembly		
V.	Special Tools List	2d	2
VI.	Federal Stock Number and Reference Number Index	2e	2

—————
* This manual supersedes SM ORD 7-8 SNL J-520, 22 March 1955, and TM 9-4910-261-50, 18 June 1958.

**OPERATOR'S, ORGANIZATIONAL, DIRECT SUPPORT,
AND GENERAL SUPPORT MAINTENANCE
REPAIR PARTS AND SPECIAL TOOLS LISTS
(INCLUDING DEPOT MAINTENANCE REPAIR PARTS AND SPECIAL TOOLS)**

Section I. INTRODUCTION

1. Scope. This manual lists repair parts required by the crew / operator for operation and required for the performance of organizational, direct support, and general support maintenance of the hydraulic dolly-type jack.

2. General. The Repair Parts List is divided into the following sections:

a. Repair Parts List-Section II. A list of repair parts authorized at the organizational level for the performance of maintenance. The list also includes parts which must be removed for replacement of the authorized parts. Parts lists are composed of functional groups in ascending numerical sequence, with the parts in each group listed in figure and item number sequence.

b. Special Tools List-Section III. Not applicable.

c. Repair Parts List-Section IV. A list of repair parts authorized for the performance of maintenance at the direct support and general support levels in figure and item number sequence.

d. Special Tools List-section V. Not applicable.

e. Federal Stock Number and Reference Number Index-Section VI. A list, in ascending numerical sequence, of all Federal stock numbers appearing in the listings, followed by a list, in alphameric sequence, of all reference numbers appearing in the listings. Federal stock numbers and reference numbers are cross-referenced to each illustration figure and item number appearance.

3. Explanation of Columns. The following provides an explanation of columns found in the tabular listings.

a. Source, Maintenance, and Recoverability Codes (SMR).

(1) *Source code.* Indicates the source for the listed items. Source codes are:

<i>(Code)</i>	<i>Explanation</i>
P	Repair parts, special tools, and test equipment supplied from the GSA / DSA or Army supply system and authorized for use at indicated maintenance categories.
P2	Repair parts, special tools, and test equipment which are procured and stocked for insurance purposes, because the combat or military essentiality of the end item dictates that a minimum quantity be available in the supply system.

<i>Code</i>	<i>Explanation</i>
P 9	Assigned to items which are NSA design controlled: unique repair parts, special tools, test, measuring and diagnostic equipment, which are stocked and supplied by the Army COMSEC Logistic System and which are not subject to the provisions of AR 380-41.
P10	Assigned to items which are NSA design controlled: special tools, test, measuring, and diagnostic equipment for COMSEC support which are accountable under the provisions of AR 380-41 and which are stocked and supplied by the Army COMSEC Logistic System.
M	Repair parts, special tools and test equipment which are not procured or stocked as such in the supply system but are to be manufactured at indicated maintenance levels.
A	Assemblies which are not procured or stocked as such but are made up of two or more units. Such component units carry individual stock numbers and descriptions, are procured and stocked separately, and can be assembled to form the required assembly at indicated maintenance categories.
X	Parts and assemblies that are not Procured or stocked because the failure rate is normally below that of the applicable end item or component. The failure of such part or assembly should result in retirement of the end item from the supply system.
X1	Repair parts which are not procured or stocked. The requirement for such items will be filled by the next higher assembly or component.
X 2	Repair parts, special tools and test equipment which are not stocked and have no foreseen mortality. The indicated maintenance category requiring such repair parts will attempt to obtain the parts through cannibalization or salvage. The item may be requisitioned, with exception data, from the end item manager for immediate use.
G	Major assemblies that are procured with PEMA funds for initial issue only as exchange assemblies at DM and GS level. These assemblies will not be stocked above DS and GS level or returned to depot supply level.

Note. Cannibalization or salvage may be used as a source of supply for any item's source coded above except those coded X1 and aircraft support items as restricted by AR 700-42.

(2) *Maintenance code.* Indicates the lowest category of maintenance authorized to install the repair part and / or use the special tool or test equipment for each application. Capabilities of higher maintenance categories are considered equal or better. Maintenance codes are:

Code	Explanation
C	Crew / operator
O	Organizational maintenance
F	Direct support maintenance
H	General support maintenance
I)	Depot maintenance

(3) Recoverability code. Indicates whether unserviceable items should be returned for recovery or salvage. Items not coded are nonrecoverable. Recoverability codes are:

Code	Explanation
R	Repair parts (assemblies and components), special tools and test equipment which are considered economically repairable at direct and general support maintenance levels. When the item is no longer economically repairable, it is normally disposed of at the GS level. When supply considerations dictate, some of these repair parts may be listed for automatic return to supply for depot level repair as set forth in AR 710-50. When so listed, they will be replaced by supply on an exchange basis.
S	Repair parts, special tools and test equipment, and assemblies which are economically repairable at DS and GS activities and which normally are furnished by supply on an exchange basis. When items are determined by a GSU to be uneconomically repairable, they will be evacuated to a depot for evaluation and analysis before final disposition.
T	High dollar value recoverable repair parts, special tools and test equipment which are subject to special handling and are issued on an exchange basis. Such items will be repaired or overhauled at depot maintenance activities only. No repair may be accomplished at lower levels.
U	Repair parts, special tools and test equipment specifically selected for salvage by reclamation units because of precious metal content, critical materials, high dollar value, or reusable casings or castings.

b. Federal Stock Number. Indicates the Federal stock number assigned to the item and will be used for requisitioning purposes.

c. Description. Indicates the Federal item name and a minimum description required to identify the item. The last line indicates the reference number followed by the applicable Federal Supply Code for Manufacturer (FSCM) in parentheses. The FSCM is used as an element in item identification to designate manufacturer or distributor or Government agency, etc., and is identified in SB 708-42. Items that are included in kits and sets are listed below the name of the kit or set with quantity of each item in the kit or set indicated in front of the item name

d. Unit of Measure (U/M). Indicates the standard or basic quantity by which the listed item is used in performing the actual maintenance function. This measure is expressed by a two-character alphabetical abbreviation, e.g., ea., in., pr, etc., and is the basis used to indicate quantities and

allowances in subsequent columns. When the unit of measure differs from the unit of issue, the lowest unit of issue that will satisfy the required units of measure will be requisitioned.

e. Quantity Incorporated in Unit. Indicates the quantity of the item used in the breakout shown on the illustration figure, which is prepared for a functional group, subfunctional group, or an assembly. A "V" appearing in this column in lieu of a quantity indicates that no specific quantity is applicable, e.g., shims, spacers, etc.

f. Maintenance Allowances. All items are authorized for use as required.

g. Illustration. This column is divided as follows:

(1) *Figure number.* Indicates the figure number of the illustration on which the item is shown.

(2) *Item number.* Indicates the callout number used to reference the item on the illustration.

4. Special Information. Repair part kits appear as the last entries in the repair parts listing for the group or assembly to which they apply.

5. How to Locate Repair Parts.

a. When Federal Stock Number or Reference Number Is Unknown:

(1) *First.* Find the illustration of the assembly or subassembly to which the repair part belongs.

(2) *Second.* Identify the repair part on the illustration and note the illustration figure and item number of the repair part.

(3) *Third.* Using the Repair Parts Listing, find the figure and item number listed in the illustration column.

b. When Federal Stock Number or Reference Number Is Known:

(1) *First.* Using the Federal Stock Number and Reference Number Index, find the pertinent Federal stock number or reference number. This index is in ascending FSN sequence followed by a list of reference numbers in ascending alphameric sequence, cross-referenced to the illustration figure and item number.

(2) *Second.* Using the Repair Parts Listing, find the illustration figure number and item number referenced in the Federal Stock Number and Reference Number Index.

6. Abbreviations.

Abbreviations	Explanation
AR	Army Regulations
c/o.	consist of
DA.	Department of the Army
w	wide, width
w/o.	without

7. Recommendations for Maintenance Publications Improvements. You can improve this manual by calling attention to errors and by recommending improvements, using DA Form 2028 (Recommended Changes to Publications) or

by a letter, and mailing directly to: Commanding General, Headquarters, U. S. Army Weapons Command, ATTN: AMSWE-MAP, Rock Island, IL 61201. A reply will be furnished directly to you.

SECTION II. REPAIR PARTS LIST

(1) ACT ON CODE	(2) SOURCE MAINT AND RECOV CODE	(3) FEDERAL STOCK NO.	(3) DESCRIPTION	(4) UNIT OF MEAS	(5) QTY INC IN	(6) 15 DAY ORGANIZATIONAL MAINTENANCE ALW	(7) ILLUSTRATION				
(a) SOURCE	(b) MAINT	(c) RECOV	REFERENCE NUMBER & MFR. CODE	USABLE ON CODE	(a) 1-5	(b) 6-20	(c) 21-50	(d) 51-100	(a) Fig.	(b) Item	
FRAME AND WHEEL ASSEMBLY											
P	O	-	5315-187-9571	PIN,COTTER 204530 (79260)	EA	2	*	*	*	1	1
P	O	-	4730-050-4208	FITTING, LUBRICATION G-16711 (79260)	EA	2	*	*	*	1	4
P	O	-	5310-891-1754	BELL CRANK ASSEMBLY NUT,PLAIN,HEXAGON 207169 (79260)	EA	1	*	*	*	2	9
P	O	-	4730-050-4208	FITTING, LUBRICATION G-16711 (79260)	EA	1	*	*	*	2	13
X1		-		RIVET-HANDLE 201808 (79260)	EA	4				2	14
X2	O	-		HYDRAULIC UNIT ASSEMBLY FILLER PLUG ASSEMBLY:C/O 900432 (79260)	EA	1				3	20
P	O	-	4730-018-9566	PLUG, PIPE 210311 (79260)	EA	2	*	*	*	3	48
P	O	-	5310-891-1754	HANDLE AND QUADRANT ASSEMBLY NUT, PLAIN, HEXAGON 207169 (79260)	EA	1	*	*	*	4	13
P	O	-	5306-281-1027	BOLT, MACHINE 200253 (79260)	EA	2	*	*	*	4	30
P	O	-	5306-543-2171	BOLT,MACHINE 200261 (79260)	EA	2	*	*	*	4	31
P	O	-	5315-018-7988	PIN, COTTER 204507 (79260)	EA	2	*	*	*	4	35

Section IV. REPAIR PARTS LIST

(1) SMR code	(2) Federal stock number	(3) Description Reference number & mfr. code	(4) Unit of meas	(5) Qty inc unit	(6) 30-day DS maint allowance			(7) 30-day GS maint allowance			(8) 1-yr alw per equip cntgcy	(9) Illustration	
					(a)	(b)	(c)	(a)	(b)	(c)		(a)	(b)
REPAIR PARTS FOR:													
FRAME AND WHEEL ASSEMBLY													
P O --	5315-187-9571	PIN, COTTER 204530 (79260)	EA	2	*	*	*	*	*	*	*	1	1
X2 F --		FRONT WHEEL ASSEMBLY: C/O FRONT WHEEL WASHER 210735 (79260)	EA	4								1	2
P O --	4730-050-4208	FITTING, LUBRICATION G-16711 (79260)	EA	2	*	*	*	*	*	*	*	1	4
X2 F --		FRONT WHEEL AND BUSHING ASSEMBLY 900283 (79260)	EA	2								1	5
X2 F --		FRONT WHEEL ROLLER 209746 (79260)	EA	26								1	6
X2 F --		FRONT WHEEL BUSHING G-1271 (79260)	EA	2								1	7
P F --	5320-013-4720	RIVET, SOLID 210731 (79260)	EA	2	*	*	*	*	*	*	*	1	8
X2 F --		FRONT AXLE G-2252 (79260)	EA	1								1	9
X --		RIGHT-HAND SIDE PLATE ASSEMBLY 900423 (79260)	EA	1								1	10
X --		LEFT-HAND SIDE PLATE ASSEMBLY 900424 (79260)	EA	1								1	11
P F --	5310-297-4168	NUT, PLAIN, HEXAGON 203309 (79260)	EA	2	*	*	*	*	*	*	*	1	12
P F --	5310-926-5885	WASHER, LOCK 201479 (79260)	EA	2	*	*	*	*	*	*	*	1	13
P F --	5310-208-5406	NUT, PLAIN, HEXAGON 203323 (79260)	EA	4	*	*	*	*	*	*	*	1	14
P F --	5310-060-9435	WASHER, LOCK 201481 (79260)	EA	4	*	*	*	*	*	*	*	1	15
P F --	5306-639-2333	BOLT, SHEAR 206329 (79260)	EA	4	*	*	*	*	*	*	*	1	16
P F --	5310-595-7157	WASHER, LOCK 209970 (79260)	EA	8	*	*	*	*	*	*	*	1	17
P F --	5306-582-6387	BOLT, SHEAR 206331 (79260)	EA	4	*	*	*	*	*	*	*	1	18

Section IV. REPAIR PARTS LIST

(1) SMR code	(2) Federal stock number	(3) Description	(4) Unit of meas	(5) Qty inc	(6) 30-day DS maint allowance			(7) 30-day GS maint allowance			(8) 1-yr alw per equip cntgcy	(9) Illustration	
					(a)	(b)	(c)	(a)	(b)	(c)	100	(a)	(b)
		Reference number & mfr. code		Usable on code	unit	1-20	21-50	51-100	1-20	21-50	51-100	Fig no.	Item no.
REPAIR PARTS FOR													
FRAME AND WHEEL ASSEMBLY-CONTINUED													
		REAR WHEEL ASSEMBLY: C/O										1	19
X2F --		SNAP RING - REAR WHEEL	EA	2								1	20
		G-2581 (79260)											
X2F --		REAR WHEEL BRACKET	EA	2								1	21
		G-793 (79260)											
X2F --		FORK - REAR WHEEL	EA	2								1	22
		G-1612 (79260)											
X2F --		BALL RACE - UPPER	EA	2								1	23
		G-23061 (79260)											
X2F --		BALL	EA	2								1	24
		B-391 (79260)											
X2F --		BALL RACE - LOWER	EA	2								1	25
		G-23071 (79260)											
X2F --		PIN - REAR AXLE	EA	4								1	26
		209422 (79260)											
X2F --		REAR WHEEL AXLE	EA	2								1	27
		G-2571 (79260)											
X2F --		REAR WHEEL AND BUSHING ASSEMBLY	EA	2								1	28
		900282 (79260)											
X2F --		WASHER - REAR WHEELS	EA	4								1	29
		204311 (79260)											
X2F --		ROLLER - REAR WHEEL	EA	20								1	30
		210734 (79260)											
X2F --		REAR WHEEL BUSHING	EA	2								1	31
		G-2191 (79260)											
P F --	5306-174-9461	BOLT, MACHINE	EA	6	*	*	*	*	*	*	*	1	32
		206301 (79260)											
P F --	5310-595-7157	WASHER, LOCK	EA	6	*	*	*	*	*	*	*	1	33
		209970 (79260)											
X2F --		BELL CRANK ASSEMBLY											
		PIN - CROSS LINK	EA	1								2	1
		G-4751 (79260)											
X2F --		PARALLEL LINK	EA	2								2	2
		G-2302 (79260)											
X2F --		CAP HOUSING	EA	1								2	3
		G-783 (79260)											
P F --	5315-262-8162	PIN, COTTER	EA	2	*	*	*	*	*	*	*	2	4
		204547 (79260)											

Section IV. REPAIR PARTS LIST														
(1)	(2)	(3)		(4)	(5)	(6)			(7)			(8)	(9)	
SMR	Federal	Description		Unit	Qty	30-day DS maint			30-day GS maint			1-yr	Illustration	
code	stock			of	inc	allowance			allowance			alw per	(a)	(b)
	number		Reference number & mfr. code	meas	in	(a)	(b)	(c)	(a)	(b)	(c)	100	Fig	Item
					unit	1-20	21-50	51-100	1-20	21-50	51-100	equip	no.	no.
			Usable on code									cntgcy		
			REPAIR PARTS FOR											
			BELL CRANK ASSEMBLY--CONTINUED											
X2F --		STUD - PARALLEL LINKS		EA	2								2	5
		G-4761 (79260)												
P F --	5315-597-7290	PIN, COTTER		EA	2	*	*	*	*	*	*	*	2	6
		204582 (79260)												
X2F --		PIN-CAP HOUSING TO BELL CRANK		EA	2								2	7
		G-4601 (79260)												
X2F --		BELL CRANK AND GREASE FITTING ASSEMBLY		EA	1								2	8
		213424 (79260)												
P O --	5310-891-1754	NUT, PLAIN, HEXAGON		EA	1	*	*	*	*	*	*	*	2	9
		207169 (79260)												
X2F --		SET SCREW		EA	1								2	10
		205390 (79260)												
X2F --		CAP		EA	1								2	11
		G-773 (79260)												
X2F --		FULCRUM PIN		EA	1								2	12
		G-4611 (79260)												
P O --	4730-050-4208	FITTING, LUBRICATION		EA	1	*	*	*	*	*	*	*	2	13
		G-16711 (79260)												
X1 --		RIVET - HANDLE		EA	4								2	14
		201808 (79260)												
X2F --		NAME PLATE		EA	1								2	15
		NPA (79260)												
		HYDRAULIC UNIT ASSEMBLY												
X2H R		HYDRAULIC UNIT ASSEMBLY: C/O		EA	1								3	
		218047 (79260)												
X2H --		HEX BOLT - RAM HEAD		EA	3								3	1
		210365 (79260)												
X1 --		GASKET - SCREEN BOLT		EA	1								3	2
		204843 (79260)												
X2H --		SCREEN - INTAKE		EA	1								3	3
		G-4541 (79260)												
X2H --		SPRING - SCREEN		EA	1								3	4
		G-4521 (79260)												
X2H --		SHIELD - SCREEN		EA	1								3	5
		G-4531 (79260)												
X2H --		PUMP GLAND NUT		EA	1								3	6
		218074 (79260)												

(1) SMR code	(2) Federal stock number	Section IV. REPAIR PARTS LIST			(4) Unit of meas	(5) Qty inc in unit	(6) 30-day DS maint allowance			(7) 30-day GS maint allowance			(8) 1-yr alw per 100 equip cntgcy	(9) Illustration	
		(3) Description	Reference number & mfr. code	Usable on code			(a)	(b)	(c)	(a)	(b)	(c)		(a)	(b)
							1-20	21-50	51-100	1-20	21-50	51-100		Fig no.	Item no.
		REPAIR PARTS FOR HYDRAULIC UNIT ASSEMBLY-CONTINUED													
X1 --		PUMP PACKING RINGS 213159 (79260)			EA	2	SEE REPAIR KIT URK 405 (79260)						3	7	
X1 --		ROPE PACKING - PUMP 218049 (79260)			EA	1	SEE REPAIR KIT URK 405 (79260)						3	8	
X2H --		WASHER - PUMP GLAND 204339 (79260)			EA	3							3	9	
X2H --		RAM HEAD 215322 (79260)			EA	1							3	10	
X2H --		NUT - RELEASE ADJUSTMENT NUT G-4411 (79260)			EA	1							3	11	
P H --	5310-272-5781	NUT, PLAIN, HEXAGON 203261 (79260)			EA	1	*	*	*	*	*	*	3	12	
X2H --		GLAND NUT - RELEASE G-4401 (79260)			EA	1							3	13	
X2H --		WASHER - RELEASE GLAND 204254 (79260)			EA	4							3	14	
X1 --		ROPE PACKING - RELEASE G-4691 (79260)			EA	1	SEE REPAIR KIT URK 405 (79260)						3	15	
P H --	5306-619-6459	BOLT, SHEAR 204736 (79260)			EA	1	*	*	*	*	*	*	3	16	
M H --		GASKET - RAM HEAD G-4491 (79260)			EA	1							3	17	
P H --	5330-585-9502	FOR REPLACEMENT USE: ASBESTOS SHEET, COMPRESSED 50 LG, 50 W, 1/32 THK SPEC MIL-A-17472			EA	1	*	*	*	*	*	*	3	17	
X2H --		PIN - RAM HEAD G-4371 (79260)			EA	1							3	18	
X2H --		SPACER - RAM PIN G-9482 (79260)			EA	2							3	19	
X20 --		FILLER PLUG ASSEMBLY: C/O 900432 (79260)			EA	1							3	20	
X1 --		AIR VENT SCREW 201392 (79260)			EA	1							3	21	
X1 --		AIR VENT GASKET 201871 (79260)			EA	1							3	22	
X2H --		PUMP AND CUP ASSEMBLY: C/O 217205 (79260)			EA	1							3	23	

Section IV. REPAIR PARTS LIST													
(1)	(2)	(3)	(4)	(5)	(6)			(7)			(8)	(9)	
SMR	Federal	Description	Unit	Qty	30-day DS maint			30-day GS maint			1-yr	Illustration	
code	stock		of	inc	allowance			allowance			alw per	(a)	(b)
	number		meas	in	(a)	(b)	(c)	(a)	(b)	(c)	100	Fig	Item
		Reference number & mfr. code		unit	1-20	21-50	51-100	1-20	21-50	51-100	equip	no.	no.
											cntgcy		
REPAIR PARTS FOR HYDRAULIC UNIT ASSEMBLY-CONTINUED													
X2H --		PUMP 216521 (79260)	EA	1								3	24
X2H --		HAIR PIN COTTER - PUMP 215628 (79260)	EA	1								3	25
X2H --		RETAINER - PUMP 216524 (79260)	EA	1								3	26
X1 --		LEATHER WASHER - PUMP 216522 (79260)	EA	1	SEE REPAIR KIT URK 405 (79260)							3	27
X1 --		U CUP-PUMP 216523 (79260)	EA	1	SEE REPAIR KIT URK 405 (79260)							3	28
X1 --		O RING - PUMP 216525 (79260)	EA	1	SEE REPAIR KIT URK 405 (79260)							3	29
X2H --		SPRING - RELEASE G-4361 (79260)	EA	1								3	30
X2H --		SPACER - RELEASE SPRING 216162 (79260)	EA	1								3	31
X2H --		ROD - RELEASE 216161 (79260)	EA	1								33	32
X2H --		HEAD - RELEASE VALVE G-4341 (79260)	EA	1								3	33
X2H --		PIN - RELEASE VALVE HEAD 200577 (79260)	EA	1								3	34
X2H --		RELIEF VALVE ASSEMBLY 216251 (79260)	EA	1								3	35
X2H --		GASKET - PLUG AND RELEASE HOUSING 201876 (79260)	EA	2	SEE REPAIR KIT URK 405 (79260)							3	36
X2H --		RAM 216154 (79260)	EA	1								3	37
X2H --		GLAND NUT - CYLINDER G-4311 (79260)	EA	1								3	38
P F --	5315-187-9571	PIN, COTTER 204549 (79260)	EA	2	*	*	*	*	*	*	*	3	39
X2F --		PIN - CYLINDER TO BELL CRANK G-4301 (79260)	EA	1								3	40
X2H --		CYLINDER G-733 (79260)	EA	1								3	41
X1 --		RING - WIPER G-4551 (79260)	EA	1	SEE REPAIR KIT URK 405 (79260)							3	42

Section IV. REPAIR PARTS LIST														
(1)	(2)	(3)		(4)	(5)	(6)			(7)			(8)	(9)	
SMR	Federal	Description		Unit	Qty	30-day DS maint			30-day GS maint			1-yr	Illustration	
code	stock			of	inc	allowance			allowance			alw per	(a)	(b)
	number		Reference number & mfr. code	meas	in	(a)	(b)	(c)	(a)	(b)	(c)	100	Fig	Item
					unit	1-20	21-50	51-100	1-20	21-50	51-100	equip	no.	no.
			Usable on code									cntgcy		
REPAIR PARTS FOR														
HYDRAULIC UNIT ASSEMBLY-CONTINUED														
X1 --		PACKING RING - CYLINDER GLAND		EA	2	SEE REPAIR KIT URK 405 (79260)							3	43
		213208 (79260)												
X2H --		RAM CUP RETAINING RING		EA	1								3	44
		216163 (79260)												
X2H --		RETAINING CUP - RAM		EA	1								3	45
		216159 (79260)												
X1 --		U CUP-RAM		EA	1	SEE REPAIR KIT URK 405 (79260)							3	46
		216155 (79260)												
X1 --		BACK-UP WASHER-RAM CUP		EA	1	SEE REPAIR KIT URK 405 (79260)							3	47
		216160 (79260)												
P O --	4730-081-9566	PLUG, PIPE		EA	2	*	*	*	*	*	*	*	3	48
		210311 (79260)												
X2H --		PLUG		EA	1	SEE REPAIR KIT URK 405 (79260)							3	49
		216158 (79260)												
X1 --		BALL		EA	1								3	50
		203207 (79260)												
X2H --		SPACER - SUCTION BALL		EA	1								3	51
		216574 (79260)												
X1 --		BALL		EA	1	SEE REPAIR KIT URK 405 (79260)							3	52
		203200 (79260)												
P H --	5306-576-2513	BOLT, MACHINE		EA	2	*	*	*	*	*	*	*	3	53
		206146 (79260)												
X2H --		HYDRAULIC UNIT, LESS CYLINDER ASSEMBLY		EA	1								3	
		SAME AS HYDRAULIC UNIT ASSEMBLY, W/O ITEMS												
		41-48-53												
P H --		REPAIR KIT: C/O		EA	1	*	*	*	*	*	*	*	3	
		URK 405 (79260)												
		1 - GASKET-SCREEN BOLT											3	2
		2 - PUMP PACKING RINGS											3	7
		1 - ROPE PACKING - PUMP											3	8
		1 - ROPE PACKING - RELEASE											3	15
		1 - LEATHER WASHER - PUMP											3	27
		1 - "U" CUP-PUMP											3	28
		1 - "O" RING - PUMP											3	29
		2 - GASKET - PLUG AND RELEASE HOUSING											3	36
		1 - RING - WIPER											3	42
		2 - PACKING RING - CYLINDER GLAND											3	43
		1 - "U" CUP-RAM											3	46

Section IV. REPAIR PARTS LIST													
(1)	(2)	(3)	(4)	(5)	(6)			(7)			(8)	(9)	
SMR	Federal	Description	Unit	Qty	30-day DS maint allowance			30-day GS maint allowance			1-yr	Illustration	
code	stock		of	inc	(a)	(b)	(c)	(a)	(b)	(c)	alw per	(a)	(b)
	number		meas	in	1-20	21-50	51-100	1-20	21-50	51-100	100	Fig	Item
		Reference number & mfr. code		unit							equip	no.	no.
											cntgcy		
REPAIR PARTS FOR HYDRAULIC UNIT ASSEMBLY-CONTINUED													
		1 - BACK-UP WASHER - RAM CUP										3	47
		1 - BALL										3	50
		1 - BALL										3	52
		HANDLE AND QUADRANT ASSEMBLY											
X2F --		SPRING - PULL BACK	EA	2								4	1
		G-2272 (79260)											
X2F --		SPRING - PUMP RETURN	EA	1								4	2
		G-19361 (79260)											
P F --		ANCHOR PIN	EA	1								4	3
		213678 (79260)											
X2F --		FOOT PEDAL PIN	EA	1								4	4
		G-22001 (79260)											
X2F --		FOOT PEDAL - RELEASE	EA	1								4	5
		G-2342 (79260)											
P F --	5315-236-8357	PIN, COTTER	EA	1	*	*	*	*	*	*	*	4	6
		204425 (79260)											
X2F --		FOOT PEDAL PIN	EA	1								4	7
		210733 (79260)											
X2F --		RELEASE PULL ROD ASSEMBLY	EA	1								4	8
		900431 (79260)											
X2F --	5315-576-0421	PIN, COTTER	EA	1	*	*	*	*	*	*	*	4	9
		204511 (79260)											
P O --		PUMP WASHER	EA	1								4	10
		204283 (79260)											
X2F --		PUMP PIN	EA	1								4	11
		210736 (79260)											
P F --		PUMP CONNECTING ROD ASSEMBLY: C/O	EA	1								4	12
		900426 (79260)											
X2F --	5310-891-1754	NUT, PLAIN, HEXAGON	EA	1	*	*	*	*	*	*	*	4	13
		207169 (79260)											
X2F --		WASHER	EA	1								4	14
		201090 (79260)											
P F --	5306-260-4508	BOLT, MACHINE	EA	1	*	*	*	*	*	*	*	4	15
		206190 (79260)											
P F --		PUMP CONNECTING LINK	EA	2								4	16
		G-4661 (79260)											
P F --		CLIP - PUMP RETURN	EA	1								4	17
		213679 (79260)											

Section IV. REPAIR PARTS LIST														
(1)	(2)	(3)		(4)	(5)	(6)			(7)			(8)	(9)	
SMR	Federal	Description		Unit	Qty	30-day DS maint			30-day GS maint			1-yr	Illustration	
code	stock			of	inc	allowance			allowance			alw per	(a)	(b)
	number		Reference number & mfr. code	meas	in	(a)	(b)	(c)	(a)	(b)	(c)	100	Fig	Item
					unit	1-20	21-50	51-100	1-20	21-50	51-100	equip	no.	no.
			Usable on code									cntgcy		
REPAIR PARTS FOR HANDLE AND QUADRANT ASSEMBLY-CONTINUED														
P F --	5315-239-8032	PIN, COTTER 204509 (79260)		EA	4	*	*	*	*	*	*	*	4	18
P F --	5315-252-6001	PIN, STRAIGHT, HEADED 210732 (79260)		EA	1	*	*	*	*	*	*	*	4	19
P F --	5315-426-8647	PIN, STRAIGHT, HEADED 213680 (79260)		EA	1	*	*	*	*	*	*	*	4	20
X2F --		QUADRANT AND ANCHOR PIN ASSEMBLY 213686 (79260)		EA	1								4	21
X2F --		PIN - HANDLE FULCRUM G-4631 (79260)		EA	1								4	22
X2F --		FOOT PEDAL 213681 (79260)		EA	1								4	23
X2F --		COMPLETE HANDLE ASSEMBLY: C/O 213685 (79260)		EA	1								4	
X2F --		PLUNGER HOUSING 213682 (79260)		EA	1								4	24
X2F --		PIN - PLUNGER HEAD 200650 (79260)		EA	1								4	25
X2F --		PLUNGER HEAD G-4571 (79260)		EA	1								4	26
P F --	5310-680-7508	NUT, PLAIN, HEXAGON 203349 (79260)		EA	4	*	*	*	*	*	*	*	4	27
P F --	5310-595-7157	WASHER, LOCK 209970 (79260)		EA	4	*	*	*	*	*	*	*	4	28
X2 --		DOWN STOP PLATE G-20281 (79260)		EA	1								4	29
P O --	5306-281-1027	BOLT, MACHINE 200253 (79260)		EA	2	*	*	*	*	*	*	*	4	30
P O --	5306-543-2171	BOLT, MACHINE 200261 (79260)		EA	2	*	*	*	*	*	*	*	4	31
X1 --		HANDLE BAR G-2222 (79260)		EA	2								4	32
X2F --		PIN - RELEASE CAM 200731 (79260)		EA	1								4	33
X2F --		CAM - HANDLE RELEASE G-4581 (79260)		EA	1								4	34
P O --	5315-018-7988	PIN, COTTER 204507 (79260)		EA	2	*	*	*	*	*	*	*	4	35

SECTION IV. REPAIR PARTS LIST

(1) SMR code	(2) Federal stock number	(3) Description	(4) Unit of meas	(5) Qty inc in unit	(6) 30-day DS maint allowance			(7) 30-day GS maint allowance			(8) 1-yr alw per 100 equip cntgcy	(9) Illustration	
					(a) 1-20	(b) 21-50	(c) 51-100	(a) 1-20	(b) 21-50	(c) 51-100		(a) Fig no.	(b) Item no.
		Reference number & mfr. code											
		usable on code											
		REPAIR PARTS FOR HANDLE AND QUADRANT ASSEMBLY-CONTINUED											
		COMPLETE HANDLE ASSEMBLY: C/O-CONTINUED											
X2F --		PLUNGER ROD	EA	1								4	36
X2F --		G-2232 (79260)	EA	1								4	37
P F --	5320-010-4114	PLUNGER SPRING G-671 (79260)	EA	4	*	*	*	*	*	*	*	4	38
X1 --		RIVET, SOLID 202891 (79260)	EA	1								4	39
P F --	5320-276-8565	RELEASE BRACKET G-3021 (79260)	EA	1	*	*	*	*	*	*	*	4	40
X1 --		RIVET, SOLID 202632 (79260)	EA	1								4	41
X2F --		RIVET-HANDLE 201808 (79260)	EA	1								4	41
P F --	5320-010-7564	RELEASE HANDLE ASSEMBLY 900305 (79206)	EA	1								4	42
P F --	5320-010-7564	RIVET, SOLID 203003 (79260)	EA	1	*	*	*	*	*	*	*	4	43
P F --	5320-010-7564	RIVET, SOLID 202979 (79260)	EA	1	*	*	*	*	*	*	*	4	44
X1 --		HANDLE GRIP G-932 (79260)	EA	1								4	45
X2F --		HANDLE BAR AND GRIP ASSEMBLY: C/O 214593 (79260)	EA	1								4	
		2 - HANDLE BAR										4	32
		4 - RIVET - RELEASE BRACKET										4	38
		1 - RELEASE BRACKET										4	39
		1 - LONG RIVET - HANDLE GRIP										4	43
		1 - SHORT RIVET - HANDLE GRIP										4	44
		1 - HANDLE GRIP										4	45

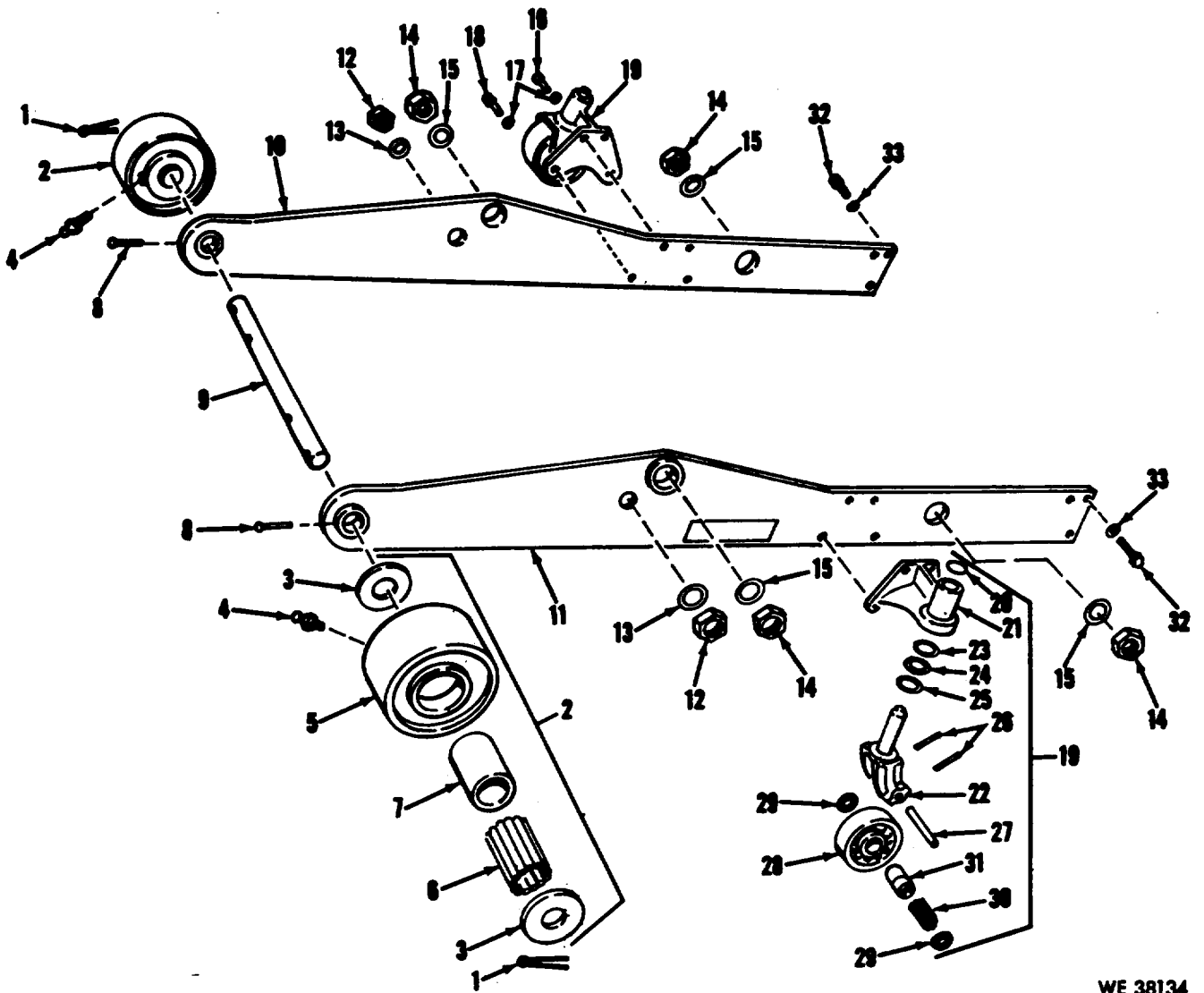
SECTION VI. FEDERAL STOCK NUMBER AND REFERENCE NUMBER INDEX

STOCK NUMBER	FIGURE NO	ITEM NO	STOCK NUMBER	FIGURE NO	ITEM NO
4730-018-9566	3	48	5310-891-1754	2	9
4730-050-4208	1	4		4	13
	2	13	5310-926-5885	1	13
5306-174-9461	1	32	5315-018-7988	4	35
5306-260-4508	4	15	5315-187-9571	1	1
5306-281-1027	4	30		3	39
5306-543-2171	4	31	5315-236-8357	4	6
5306-576-2513	3	53	5315-239-8032	4	18
5306-582-6387	1	18	5315-252-6001	4	19
5306-619-6459	3	16	5315-262-8162	2	4
5306-639-2333	1	16	5315-426-8647	4	20
5310-060-9435	1	15	5315-576-0421	4	9
5310-208-5406	1	14	5315-597-7290	2	6
5310-272-5781	3	12	5320-010-4114	4	38
5310-297-4168	1	12	5320-010-7564	4	43
5310-595-7157	1	17		4	44
	1	33	5320-013-4720	1	8
	4	28	5320-276-8565	4	40
5310-680-7508	4	27	5330-585-9502	3	17

REFERENCE NUMBER	MFG CODE	FIG NO	ITEM NO	REFERENCE NUMBER	MFG CODE	FIG NO	ITEM NO
B-391	79260	1	24	G-733	79260	3	41
G-1271	79260	1	7	G-773	79260	2	11
G-1612	79260	1	22	G-783	79260	2	3
G-16711	79260	1	4	G-793	79260	1	21
		2	13	G-932	79260	4	45
G-19361	79260	4	2	G-9482	79260	3	19
G-20281	79260	4	29	NPA	79260	2	15
G-2191	79260	1	31	SPEC MIL-A-17472		3	17
G-22001	79260	4	4	URK405	79260	3	-
G-2222	79260	4	32	200253	79260	4	30
G-2232	79260	4	36	200261	79260	4	31
G-2252	79260	1	9	200577	79260	3	34
G-2272	79260	4	1	200650	79260	4	25
G-2302	79260	2	2	200731	79260	4	33
G-23061	79260	1	23	201090	79260	4	14
G-23071	79260	1	25	201392	79260	3	21
G-2342	79260	4	5	201479	79260	1	13
G-2571	79260	1	27	201481	79260	1	15
G-2581	79260	1	20	201808	79260	2	14
G-3021	79260	4	39			4	41
G-4301	79260	3	40	201871	79260	3	22
G-4311	79260	3	38	201876	79260	3	36
G-4341	79260	3	33	202632	79260	4	40
G-4361	79260	3	30	202891	79260	4	38
G-4371	79260	3	18	202979	79260	4	44
G-4401	79260	3	13	203003	79260	4	43
G-4411	79260	3	11	203200	79260	3	52
G-4491	79260	3	17	203207	79260	3	50
G-4521	79260	3	4	203261	79260	3	12
G-4531	79260	3	5	203309	79260	1	12
G-4541	79260	3	3	203323	79260	1	14
G-4551	79260	3	42	203349	79260	4	27
G-4571	79260	4	26	204254	79260	3	14
G-4581	79260	4	34	204283	79260	4	10
G-4601	79260	2	7	204311	79260	1	29
G-4611	79260	2	12	204339	79260	3	9
G-4631	79260	4	22	204425	79260	4	6
G-4661	79260	4	16	204507	79260	4	35
G-4691	79260	3	15	204309	79260	4	18
G-4751	79260	2	1	204511	79260	4	9
G-4761	79260	2	5	204530	79260	1	1
G-671	79260	4	37	204547	79260	2	4

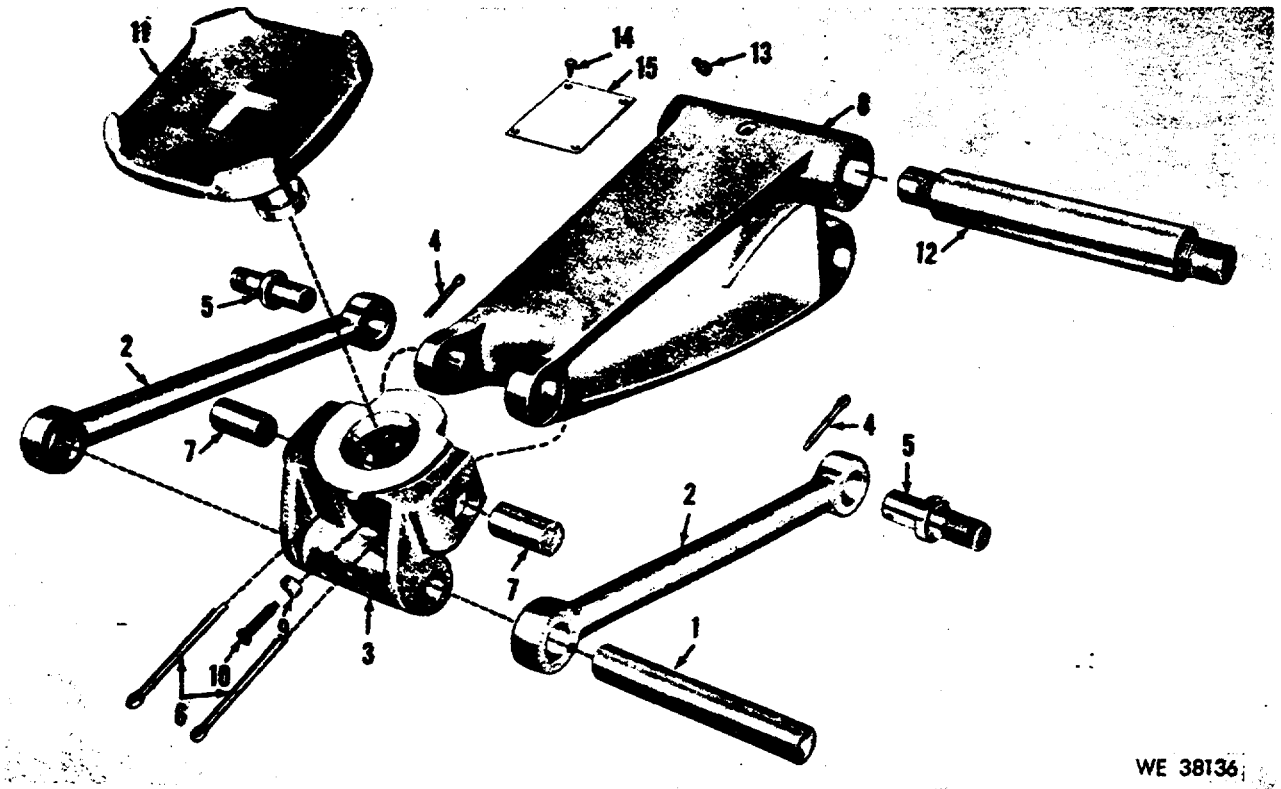
SECTION VI. FEDERAL STOCK NUMBER AND REFERENCE
NUMBER INDEX-CONTINUED

REFERENCE-NUMBER	MFG CODE	FIG NO	ITEM NO	REFERENCE NUMBER	MFG CODE	FIG NO	ITEM NO
204549	79260	3	39	213685	79260	4	-
204582	79260	2	6	213686	79260	4	21
204736	79260	3	16	214593	79260	4	-
204843	79260	3	2	215322	79260	3	10
205390	79260	2	10	215628	79260	3	25
206146	79260	3	53	216154	79260	3	37
206190	79260	4	15	216155	79260	3	46
206301	79260	1	32	216158	79260	3	49
206329	79260	1	16	216159	79260	3	45
206331	79260	1	18	216160	79260	3	47
207169	79260	2	9	216161	79260	3	32
		4	13	216162	79260	3	31
209422	79260	1	26	216163	79260	3	44
209746	79260	1	6	216251	79260	3	35
209970	79260	1	17	216521	79260	3	24
		1	33	216522	79260	3	27
		4	28	216523	79260	3	28
210311	79260	3	48	216524	79260	3	26
210365	79260	3	1	216525	79260	3	29
210731	79260	1	8	216574	79260	3	51
210732	79260	4	19	217205	79260	3	23
210733	79260	4	7	218047	79260	3	-
210734	79260	1	30	218048	79260	3	-
210735	79260	1	3	218049	79260	3	8
210736	79260	4	11	218074	79260	3	6
213159	79260	3	7	900282	79260	1	28
213208	79260	3	43	900283	79260	1	5
213424	79260	2	8	900305	79260	4	42
213678	79260	4	3	900423	79260	1	10
213679	79260	4	17	900424	79260	1	11
213680	79260	4	20	900426	79260	4	12
213681	79260	4	23	900431	79260	4	8
213682	79260	4	24	900432	79260	3	20



WE 38134

Figure 1. Frame and wheel assembly



WE 38136

Figure 2. Bell crank assembly

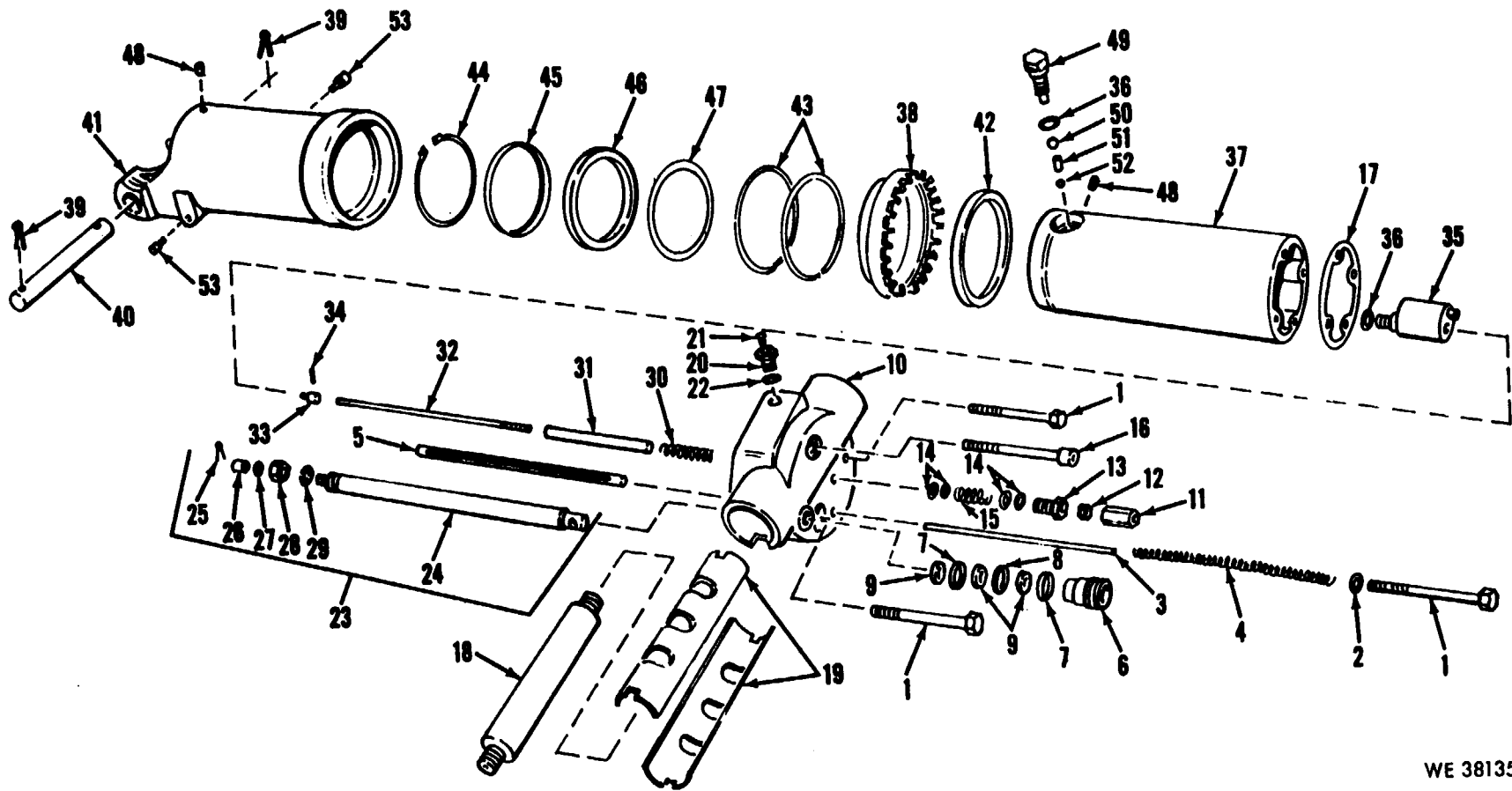
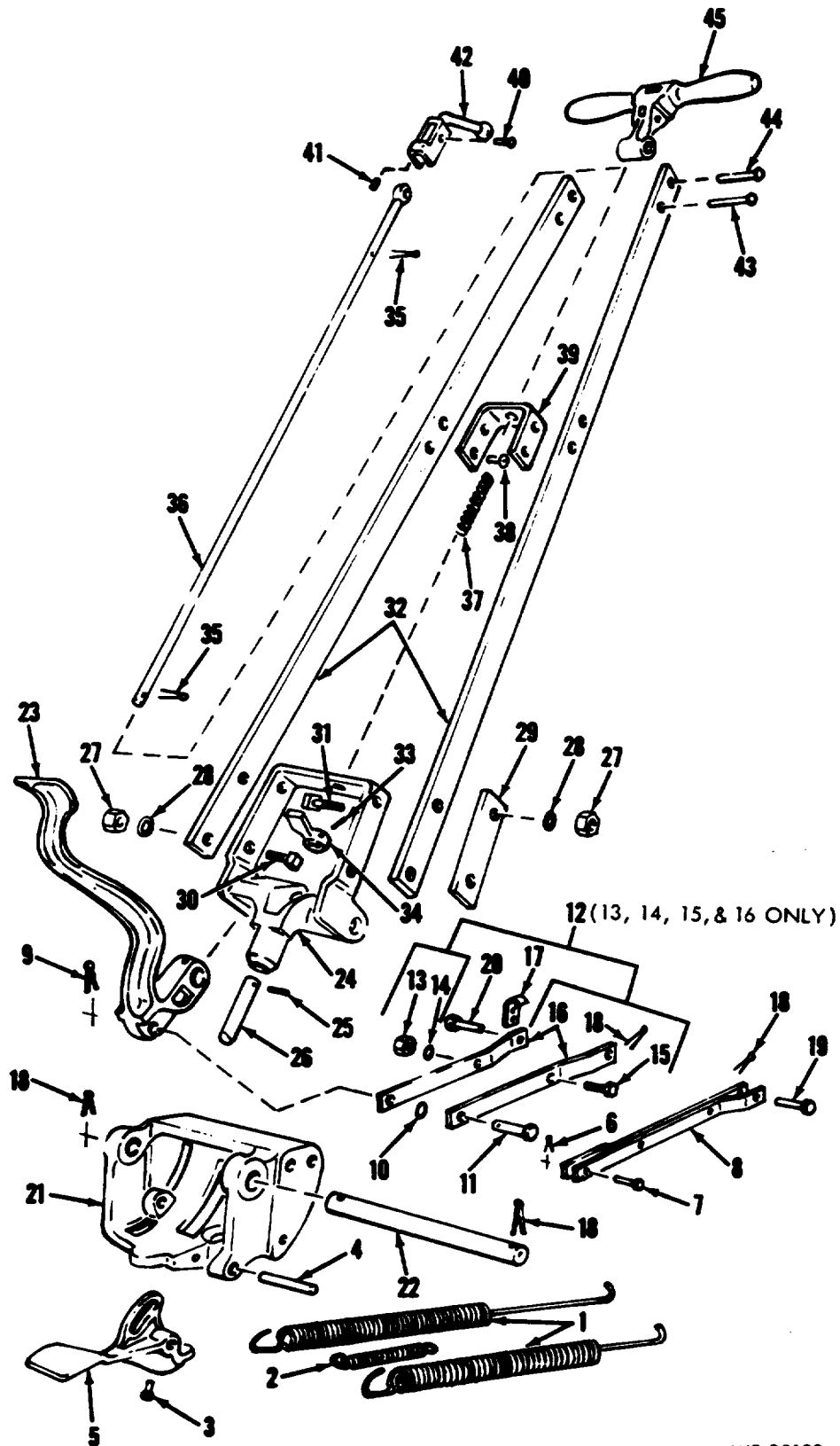


Figure 3. Hydraulic unit assembly

WE 38135



WE 38133

Figure 4. Handle and quadrant assembly

By Order of the Secretary of the Army:

**W. C. WESTMORELAND,
General, United States Army,
Chief of Staff.**

Official:

**VERNE L. BOWERS,
Major General, United States Army,
The Adjutant General.**

DISTRIBUTION :

Active Army:

**DCSLOG (1)
CNGB (1)
CofSptS (1)
Dir of Trans (1)
TSG (1)
USARABD (1)
USAARENBD (1)
USAMC (2)
CONARC (31)
USACDCEC (10)
ARADCOM (2)
ARADCOM Rgn (2)
USAREUR (1)
USAS/TC&FG (3)
LOGCOMD (3)
Engr FLDMS (2)
Ft Knox FLDMS (10)
QM FLDMS (1)
USATCFE (2)
USAOC&S (1)
USACOMZEUR (3)
USAWECOM (10)
USAAPSA (4)
Armies (3) except
 Seventh (5)
 Eighth (5)
USARJ (2)
USARHAW (2)
Edgewood Arsenal (1)
RSA (1)**

**Depots (2)
USAATC (2)
WSMR (5)
USSOUTHCOM (1)
USARYIS (3)
USARAL (1)
MAAG IRAN (1)
Units org under fol TOE's:
 (2 copies each)
 7-100
 9-9
 9-197
 9-247
 9-357
 10-349
 17
 17-100
 29-11
 29-21
 29-25
 29-26
 29-35
 29-36
 29-75
 29-79
 29-137
 29427
 37
 37-100**

NG: State AG (3); Unita acme as Active Army except allowance is one (1) copy to each unit.

USAR: None

For explanation of abbreviations uacd, see AR 310-50.

RECOMMENDED CHANGES TO EQUIPMENT TECHNICAL PUBLICATIONS



THEN...JOT DOWN THE
DOPE ABOUT IT ON THIS FORM.
CAREFULLY TEAR IT OUT, FOLD IT
AND DROP IT IN THE MAIL.

SOMETHING WRONG WITH PUBLICATION

FROM: (PRINT YOUR UNIT'S COMPLETE ADDRESS)

DATE SENT

PUBLICATION NUMBER

PUBLICATION DATE

PUBLICATION TITLE

BE EXACT PIN-POINT WHERE IT IS

PAGE
NO.

PARA-
GRAPH

FIGURE
NO.

TABLE
NO.

IN THIS SPACE, TELL WHAT IS WRONG
AND WHAT SHOULD BE DONE ABOUT IT.

TEAR ALONG PERFORATED LINE

PRINTED NAME, GRADE OR TITLE AND TELEPHONE NUMBER

SIGN HERE

The Metric System and Equivalents

Linear Measure

1 centimeter = 10 millimeters = .39 inch
 1 decimeter = 10 centimeters = 3.94 inches
 1 meter = 10 decimeters = 39.37 inches
 1 dekameter = 10 meters = 32.8 feet
 1 hectometer = 10 dekameters = 328.08 feet
 1 kilometer = 10 hectometers = 3,280.8 feet

Weights

1 centigram = 10 milligrams = .15 grain
 1 decigram = 10 centigrams = 1.54 grains
 1 gram = 10 decigrams = .035 ounce
 1 dekagram = 10 grams = .35 ounce
 1 hectogram = 10 dekagrams = 3.52 ounces
 1 kilogram = 10 hectograms = 2.2 pounds
 1 quintal = 100 kilograms = 220.46 pounds
 1 metric ton = 10 quintals = 1.1 short tons

Liquid Measure

1 centiliter = 10 milliliters = .34 fl. ounce
 1 deciliter = 10 centiliters = 3.38 fl. ounces
 1 liter = 10 deciliters = 33.81 fl. ounces
 1 dekaliter = 10 liters = 2.64 gallons
 1 hectoliter = 10 dekaliters = 26.42 gallons
 1 kiloliter = 10 hectoliters = 264.18 gallons

Square Measure

1 sq. centimeter = 100 sq. millimeters = .155 sq. inch
 1 sq. decimeter = 100 sq. centimeters = 15.5 sq. inches
 1 sq. meter (centare) = 100 sq. decimeters = 10.76 sq. feet
 1 sq. dekameter (are) = 100 sq. meters = 1,076.4 sq. feet
 1 sq. hectometer (hectare) = 100 sq. dekameters = 2.47 acres
 1 sq. kilometer = 100 sq. hectometers = .386 sq. mile

Cubic Measure

1 cu. centimeter = 1000 cu. millimeters = .06 cu. inch
 1 cu. decimeter = 1000 cu. centimeters = 61.02 cu. inches
 1 cu. meter = 1000 cu. decimeters = 35.31 cu. feet

Approximate Conversion Factors

To change	To	Multiply by	To change	To	Multiply by
inches	centimeters	2.540	ounce-inches	newton-meters	.007062
feet	meters	.305	centimeters	inches	.394
yards	meters	.914	meters	feet	3.280
miles	kilometers	1.609	meters	yards	1.094
square inches	square centimeters	6.451	kilometers	miles	.621
square feet	square meters	.093	square centimeters	square inches	.155
square yards	square meters	.836	square meters	square feet	10.764
square miles	square kilometers	2.590	square meters	square yards	1.196
acres	square hectometers	.405	square kilometers	square miles	.386
cubic feet	cubic meters	.028	square hectometers	acres	2.471
cubic yards	cubic meters	.765	cubic meters	cubic feet	35.315
fluid ounces	milliliters	29.573	cubic meters	cubic yards	1.308
pints	liters	.473	milliliters	fluid ounces	.034
quarts	liters	.946	liters	pints	2.113
gallons	liters	3.785	liters	quarts	1.057
ounces	grams	28.349	liters	gallons	.264
pounds	kilograms	.454	grams	ounces	.035
short tons	metric tons	.907	kilograms	pounds	2.205
pound-feet	newton-meters	1.356	metric tons	short tons	1.102
pound-inches	newton-meters	.11296			

Temperature (Exact)

°F	Fahrenheit	5/9 (after	Celsius	°C
	temperature	subtracting 32)	temperature	

PIN: 022694-000